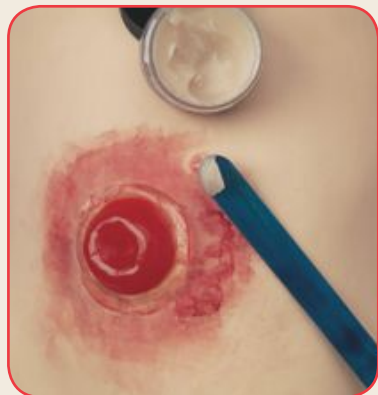


Nasco **Life/form**®

HOW TO CREATE AN INFECTED OSTOMY WOUND





Stage 1

When starting a moulage, first use an alcohol wipe to clean person or manikin.

Note: Makeup may stain manikin or person modeling. Check manufacturer's recommendations prior to using alcohol wipes or makeup on manikins.

Materials Needed:

- Alcohol pads
- Large ostomy
- Manikin or person



Stage 2

Place ostomy in desired location so you get an idea how big the wound area will be. Remove the wound. Using the foam wedge and clotted red grease paint makeup, place makeup around and slightly under the edges where the wound will be placed. If desired, for greater adhesion, brush spirit gum on wound location and back of wound. Let spirit gum dry until it feels sticky before final placement of wound.

Materials Needed:

- Clotted red makeup
- Foam wedge
- Paintbrush
- Spirit gum (if needed)



Stage 3

Apply wound to desired area and hold in place until wound and spirit gum begin to set.

Materials Needed:

- Ostomy wound



Stage 4

Use the modeling wax around the wound's edges to add realism between the skin and moulage. Smooth out modeling wax around area of the wound to create a seamless appearance.

Materials Needed:

- Modeling wax
- Craft stick



Stage 5

Now you can begin adding the maroon grease makeup. Use foam wedges to even out coloration. Small amounts of clotted red can also be added.

Materials Needed:

- Injury wheel makeup – maroon
- Clotted red makeup
- Foam wedges



Stage 6

Using a craft stick or paintbrush, add glycerin to the wound for a shiny, wet look that adds realism.

Note: The steps given are only a suggestion – have fun and experiment!

Materials Needed:

- Paintbrush or craft stick
- Glycerin



Storage Tips:

- The ostomy can be reused if properly placed into plastic wrap or a resealable bag.
- The ostomy can be cleaned with soap and water and air dried.
- Some dirt and makeup will be removed, but some makeup will remain.
- The materials used in creating lifelike wounds are very delicate. Each wound is hand painted with care. Colors and shapes may vary slightly.
- Nasco reserves the right to change product color, materials, supplies, or function as needed.

Other Available *Life/form*® Simulators



Life/form® Advanced Nursing Wound Simulation Kit (LF00794U)



901 Janesville Avenue, P.O. Box 901
Fort Atkinson, Wisconsin 53538-0901

eNasco.com
1-800-558-9595

E-mail: lifeform@eNasco.com
COPYRIGHT © NASCO 2014 PRINTED IN U.S.A. NP051-14