

Dedicated to Delivery  
*Nasco* **Life/form**®

# Burn Simulation Kit LF00795U Instruction Manual



ISO 9001 and  
ISO 13485

*Nasco* **Plastics**  
ISO 9001 and ISO 13485

Products are manufactured using a quality management system  
certified as being in conformity with ISO 9001 and ISO 13485.

**Life/form**®

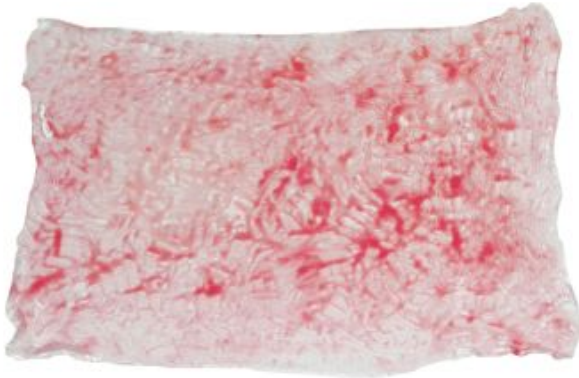
**5**  
Year  
Warranty

**Life/form**® Products by Nasco



**First-Degree Burn: LF00725(A)U**

- Appearance — Redness
- Texture — Dry
- Sensation — Painful
- Healing Time — 1 week or less



**Second-Degree Burn: LF00725(B)U**

- Superficial partial thickness
- Appearance — Red with clear blisters  
Blanches with pressure
- Texture — Moist
- Sensation — Painful
- Healing time — 2-3 weeks



### **Second-Degree Burn: LF00725(C)U**

- Deep partial thickness
- Appearance — Red and white with bloody blisters  
Less blanching
- Texture — Moist
- Sensation — Painful
- Healing time — Weeks, may progress to third degree



### **Third-Degree Burn: LF00725(D)U**

- Full thickness burn
- Appearance — Stiff and white/brown
- Texture — Dry and leathery
- Sensation — Painless
- Healing time — Requires excision
- Complications — Scarring, contractures, amputation

## About the Simulator

Just like a real wound, the materials used in creating the simulated burns are very delicate. Use caution when applying and removing wounds. Wounds are hand-painted with care. Color and shape of the simulated burns may vary.

## List of Components

### Wounds

- Blisters
- Blood Blisters
- Burns, 1<sup>st</sup> Degree, 2<sup>nd</sup> Degree (Superficial), 2<sup>nd</sup> Degree (Deep), 3<sup>rd</sup> Degree

### Makeup and Accessories

- Alcohol Prep Swabs
- Ash Dust Powder
- Black Soot Powder
- Blood Blister Makeup
- Blood Paste
- Brushes
- Clotted Red Makeup
- Dirt Powder
- Foam Wedges
- Gloves
- Glycerin
- Hard Carry Case
- Injury Shades Makeup Wheel
- Instruction Booklets
- Light Cream Makeup
- Magic Blood Powder
- Red Rubber Round
- Spirit Gum Remover
- Spirit Gum with Brush
- Spray Bottle
- Stipple Sponges
- Wet Wipes

## **Care of Simulator**

### **Cleaning**

Wounds will become less tacky with use. Clean wounds with warm water and mild soap. Dry completely with a clean towel or allow to air dry.

### **Storage**

Place clean, dry wounds in a sealed bag.

### **Cautions**

To extend the life of your simulated burns, handle them with care and follow the cleaning and storing procedures. Wounds are delicate and easily tear during removal and application.

Makeup used with wounds may stain human models, trainer/manikin, and simulated wound. Use makeup with care.

Solvents or corrosive materials will damage the simulated wounds. Never place wounds on newsprint, printed paper, plastic or ball-point pen. These materials will transfer indelible stains.

## **Replacement Supplies for the Burn Simulation Kit**

<b>LF00725(A)U</b>	1st Degree Burn Roll
<b>LF00725(B)U</b>	2nd Degree Superficial Partial Thickness Burn Roll
<b>LF00725(C)U</b>	2nd Degree Deep Partial Thickness Burn Roll
<b>LF00725(D)U</b>	3rd Degree Burn Roll
<b>LF00725U</b>	Simulated Burns, Set of 4 (1st, 2nd, 2nd, 3rd)
<b>LF00726U</b>	Blisters, 1 Roll, 7" x 10"
<b>LF00727U</b>	Blood Blisters, 1 Roll, 7" x 10"
<b>LF00751U</b>	Blood Paste, 1 oz.
<b>LF00755U</b>	Spirit Gum, 1 oz. w/Brush
<b>LF00756U</b>	Spirit Gum Remover, 2 oz.
<b>LF00758U</b>	Magic Blood Powder, Mini
<b>LF00760U</b>	Injury Shades Makeup Wheel, 1-oz. Jar
<b>LF00764U</b>	Grease Paint Makeup, Blood Blister, ½-oz. Jar
<b>LF00777U</b>	Grease Paint Makeup, Clotted Red, ½-oz. Jar
<b>LF00780U</b>	Grease Paint Makeup, Light Cream, ½-oz. Jar
<b>LF00786U</b>	Black Soot Powder, 5-oz. Jar
<b>LF00787U</b>	Ash Dust Powder, 5-oz. Jar
<b>LF00788U</b>	Dirt Powder, 5-oz. Jar

## **Available Supplies for the Burn Simulation Kit**

<b>LF00750U</b>	Blood Gel with Brush
<b>LF00752U</b>	Modeling Wax, Flesh Color, 1.75-oz. Jar
<b>LF00753U</b>	Modeling Wax, Blood Color, 1-oz. Jar
<b>LF00754</b>	Liquid Latex, Clear, 1-oz. Bottle
<b>LF00757U</b>	Makeup Remover, 2-oz. Bottle
<b>LF00759(B)U</b>	Pus Jar, Flesh Color, 2-oz. Jar
<b>SB49386U</b>	Skin Tite Adhesive

## **Available Supplies for the Ultra Nursing Wound Simulation Kit**

<b>LF00761U</b>	Primary Colors Makeup Wheel
<b>LF00762U</b>	Special Effects Makeup Wheel
<b>LF00763U</b>	Grease Paint Makeup, Capillary Shadow, 1/2-oz. Jar
<b>LF00765U</b>	Grease Paint Makeup, Blithe Spirit, 1/2-oz. Jar
<b>LF00766U</b>	Makeup, Rose Blush, 1/2-oz. Jar
<b>LF00767U</b>	Makeup, Mold Green, 1/2-oz. Jar
<b>LF00768U</b>	Grease Paint Makeup, White, 1/2-oz. Jar
<b>LF00769U</b>	Grease Paint Makeup, Black, 1/2-oz. Jar
<b>LF00770U</b>	Grease Paint Makeup, Red, 1/2-oz. Jar
<b>LF00771U</b>	Grease Paint Makeup, Green, 1/2-oz. Jar
<b>LF00772U</b>	Grease Paint Makeup, Deep Yellow, 1/2-oz. Jar
<b>LF00773U</b>	Grease Paint Makeup, Yellow, 1/2-oz. Jar
<b>LF00774U</b>	Grease Paint Makeup, Forest Green, 1/2-oz. Jar
<b>LF00755U</b>	Grease Paint Makeup, Blue, 1/2-oz. Jar
<b>LF00776U</b>	Grease Paint Makeup, Dark Purple, 1/2-oz. Jar
<b>LF00777U</b>	Grease Paint Makeup, Clotted Red, 1/2-oz. Jar
<b>LF00778U</b>	Grease Paint Makeup, Corpse Flesh, 1/2-oz. Jar
<b>LF00779U</b>	Grease Paint Makeup, Frankie Gray, 1/2-oz. Jar
<b>LF00781U</b>	Grease Paint Makeup, Ebony, 1/2-oz. Jar
<b>LF00782U</b>	Grease Paint Makeup, Milk Chocolate, 1/2-oz. Jar
<b>LF00783U</b>	Grease Paint Makeup, Medium Honey, 1/2-oz. Jar
<b>LF00784U</b>	Grease Paint Makeup, Warm Honey, 1/2-oz. Jar
<b>LF00789U</b>	Crème Make-up Wheel (Auguste)
<b>LF01116U</b>	KY Jelly
<b>LF01178U</b>	Blood Kit, Blue & Red, Pkg. of 5
<b>LF03774U</b>	Methyl Cellulose
<b>LF09919U</b>	Nasco Cleaner

# Other Available *Life/form*® Replacement Wounds and Supplies

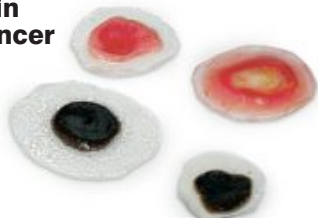
**LF00730U**  
Pressure  
Ulcers



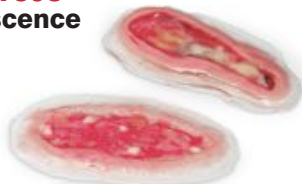
**LF00735U**  
Incisions



**LF00731U**  
Skin  
Cancer



**LF00736U**  
Dihiscence



**LF00732U**  
Cysts



**LF00737U**  
Lacerations



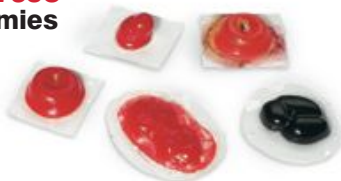
**LF00733U**  
Infected Cyst



**LF00734U**  
Abrasion



**LF00738U**  
Ostomies



**LF00759(A-C)U**  
Stool, Pus, & Mucous



**LF00739U**  
Boils



*Nasco* Fort Atkinson

901 Janesville Avenue, P.O. Box 901  
Fort Atkinson, Wisconsin 53538-0901  
1.800.558.9595

eNasco.com • E-mail: [lifeform@eNasco.com](mailto:lifeform@eNasco.com)